



Multi-view service:

1 You can enjoy myTV SUPER service anytime anywhere with an additional device.



2 Concurrent service with myTV SUPER Box, plus individual choice of contents on additional mobile or computer device.



Points to note:

- 1) Mobile pairing under the same network is recommended.
- 2) Each myTV SUPER Multi-view service can switch to other compatible device for 3 times a month at maximum.



• To view the Pairing Tutorials, please scan



• Visit myTV SUPER website: www.mytvsuper.com/en

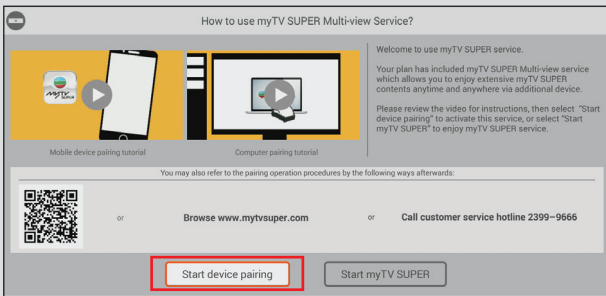
• Or contact Customer Service Hotline at 2399 9666 for any questions

Mobile Device Pairing Tutorial

Step 1

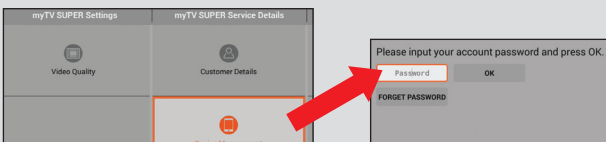
myTV SUPER Box UI

• Applicable to myTV SUPER Box customers newly activate the service

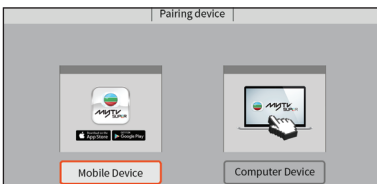


Follow the instructions to pair your device at once after successful activate myTV SUPER box.

• Applicable to myTV SUPER Box customers already activated the service



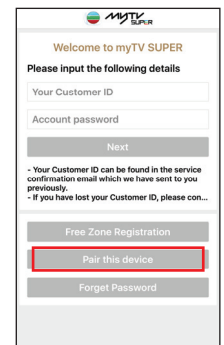
Turn on your myTV SUPER box. Go to VOD Home page and press the "Menu" button. Select "Pairing Devices" at "Device Management" and input account password.



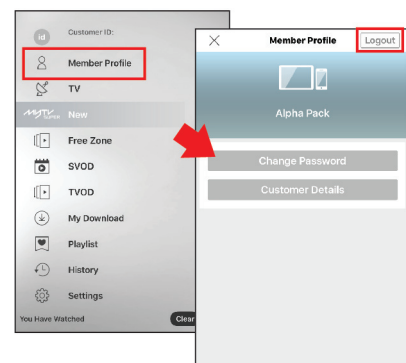
Select "Mobile Device".

Mobile Device UI

1. Please download myTV SUPER app.
2. Open the app and select "Pair this device".



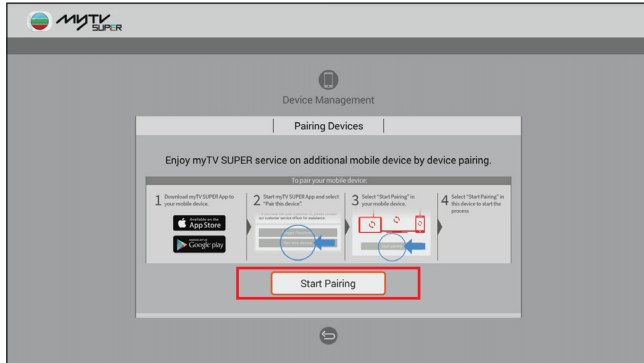
3. If you already activated myTV SUPER app, please log out at "Member Profile" and you can find the "Pair this device" button.



Step 2

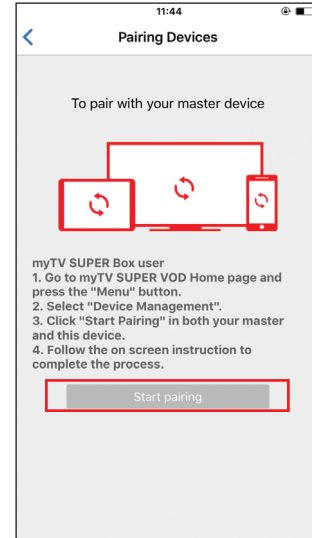
myTV SUPER Box UI

Please press "Start Pairing" in myTV SUPER box to detect available pairing device.



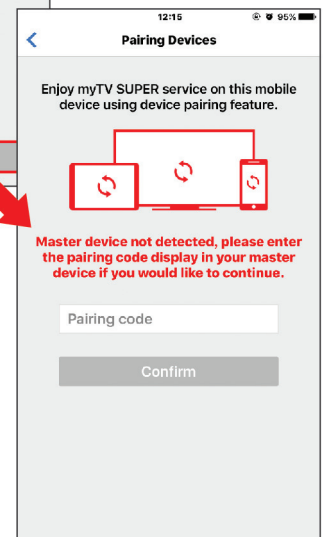
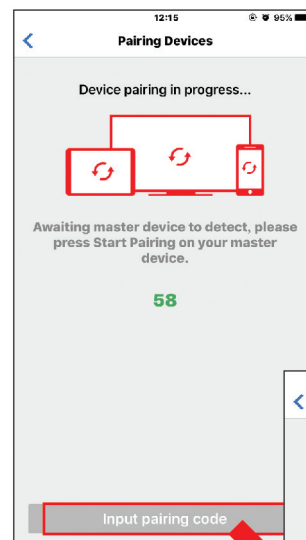
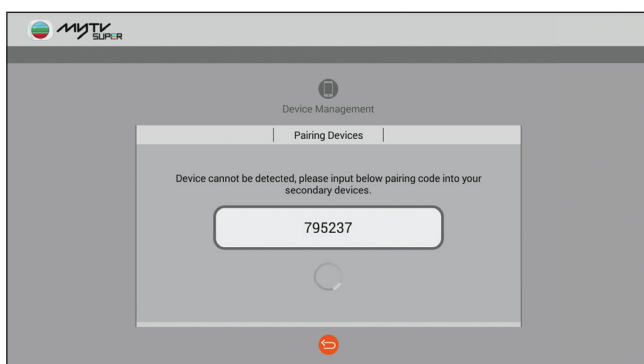
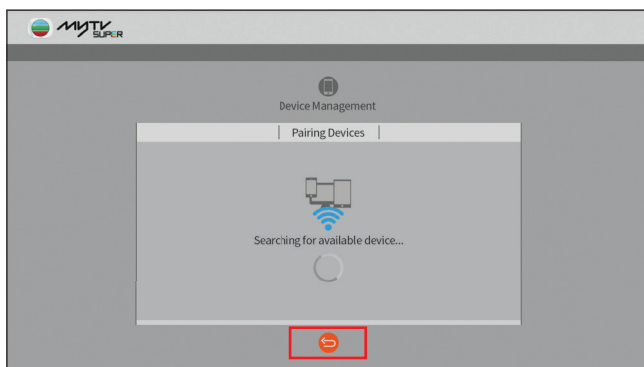
Mobile Device UI

Please press "Start Pairing" in myTV SUPER app to detect available pairing device.



Step 3

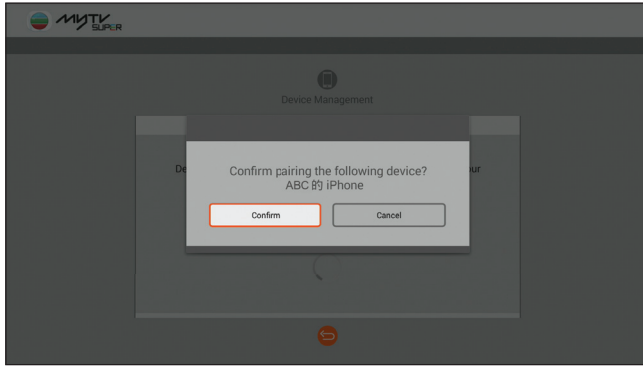
myTV SUPER box will auto detect mobile device to be paired. If pairing device cannot be detected after 5 seconds, please press "return" button. And myTV SUPER Box screen will display a pairing code, please input the pairing code in your pairing device.



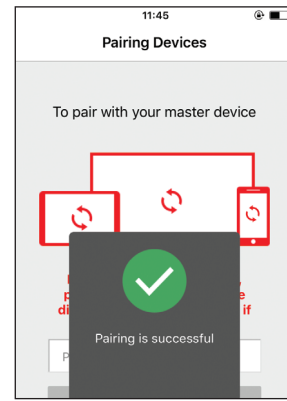
Step 4

myTV SUPER Box UI

Press "Confirm" to complete device pairing.

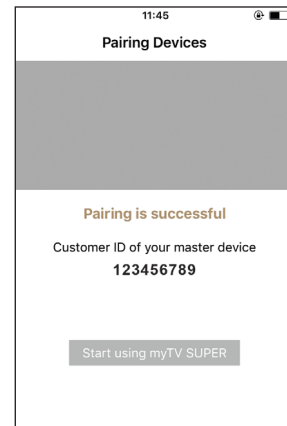
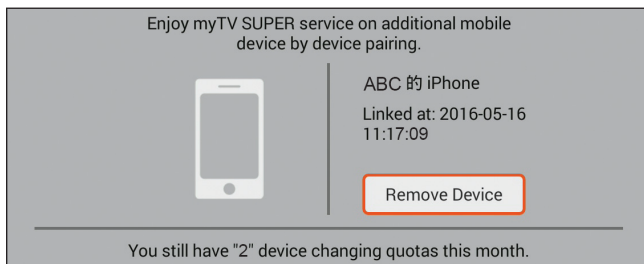


Mobile Device UI



Step 5

Pairing device successful.



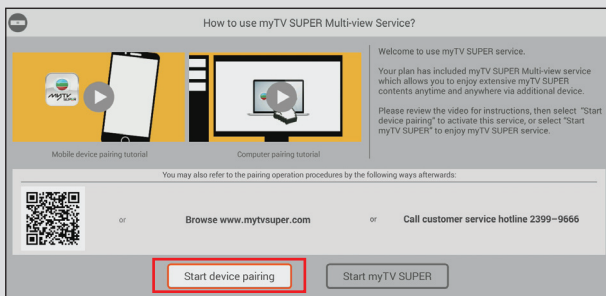
Note: Remove Mobile device pairing: Press "Remove Device" and select "Confirm" to remove the paired device.

Computer Pairing Tutorial

Step 1

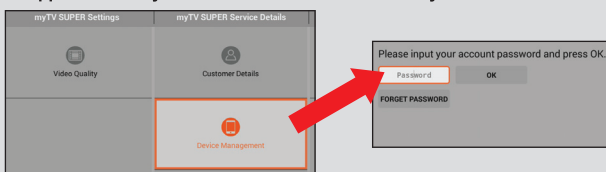
myTV SUPER Box UI

● Applicable to myTV SUPER Box customers newly activate the service

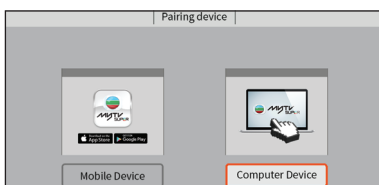


Follow the instructions to pair your device at once after successful activate myTV SUPER box.

● Applicable to myTV SUPER Box customers already activated the service



Turn on your myTV SUPER box. Go to VOD Home page and press the "Menu" button. Select "Pairing Devices" at "Device Management" and input account password.



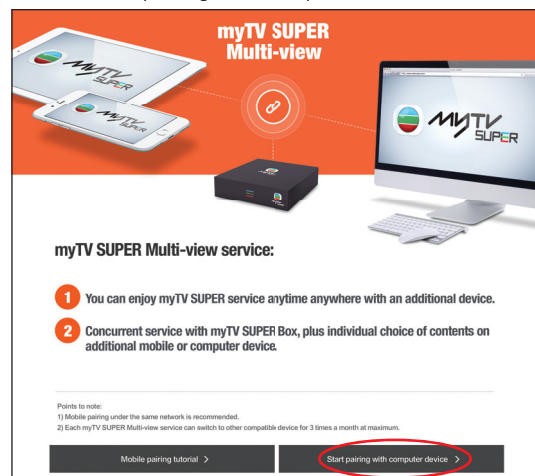
Select "Computer Device".

Computer Device UI

Go to myTV SUPER website and press "myTV SUPER Multi-view".



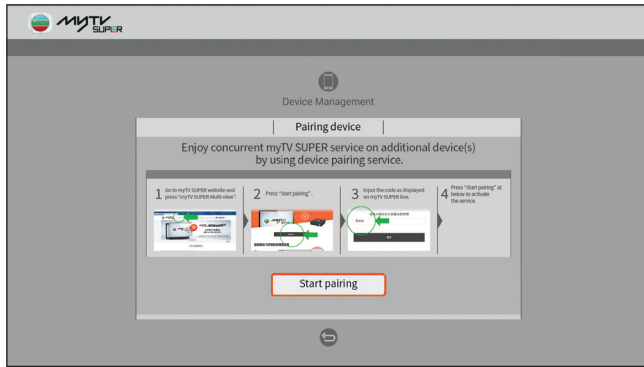
Select "Start pairing with computer device".



Step 2

myTV SUPER Box UI

Follow instructions, and select "Start pairing".



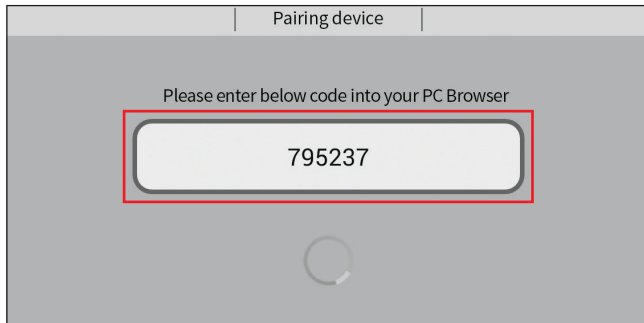
Computer Device UI

Select "Start pairing".

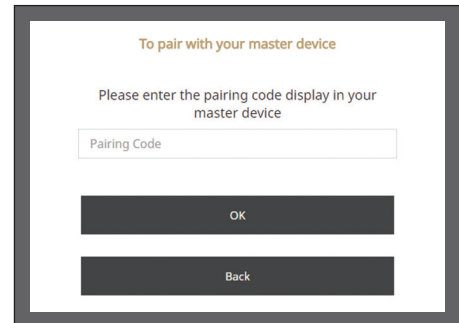


Step 3

myTV SUPER Box screen will display a pairing code, please input the pairing code in your pairing device.

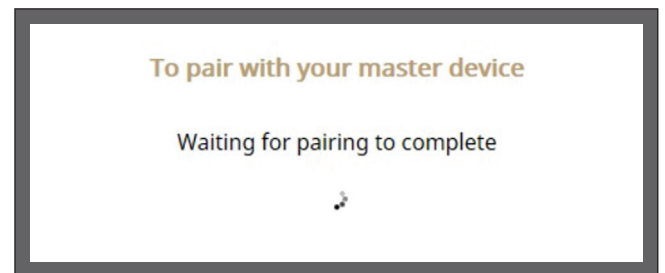
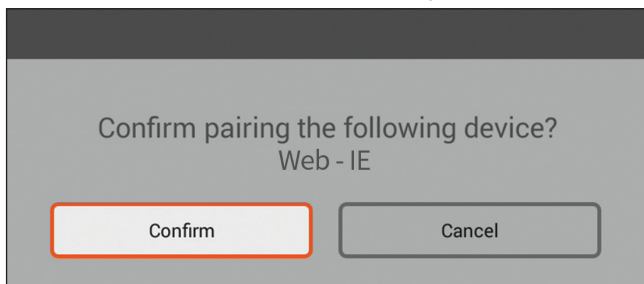


1. Input the code as displayed on myTV SUPER box.
2. Select "OK".



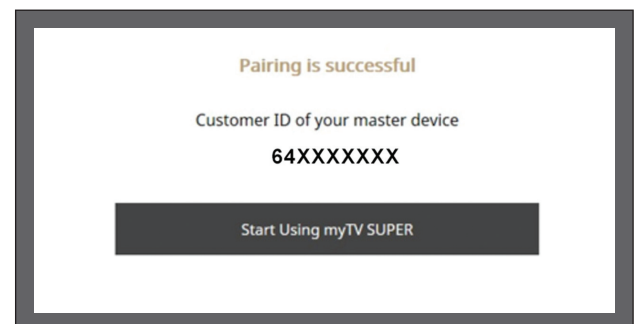
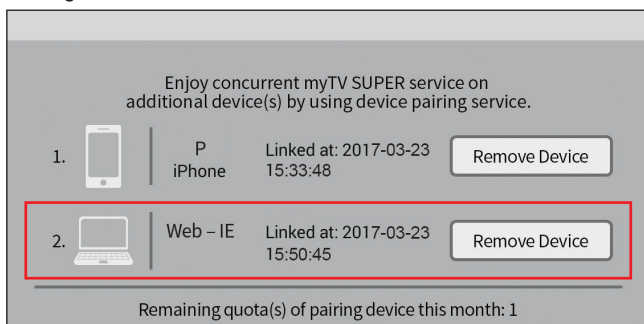
Step 4

Select "Confirm" to complete device pairing.



Step 5

Pairing device successful.



Note: Remove Computer device pairing:
Press "Remove Device" and select "Confirm" to remove the paired device.